

Factors Affecting the Phenomenon of Poverty in Iraq (Anbar as a Model)

Ayad Mohammed Mikhli¹, Nadia Talib Salem^{2*}

¹ Department of Geography, College of Education for Humanities, University of Anbar, IRAQ

*Corresponding Author: nad23h5005@uoanbar.edu.iq

Citation: Mikhli, A. M. & Salem, N. T. (2025). Factors Affecting the Phenomenon of Poverty in Iraq (Anbar as a Model), *Journal of Cultural Analysis and Social Change*, 10(4), 633-645. <https://doi.org/10.64753/jcasc.v10i4.2920>

Published: December 06, 2025

ABSTRACT

Poverty is a complex issue that results from the interaction of social, political, and economic elements that affect people's capacity to achieve their most basic need. Developing effective measures to lessen its effects on people and society is made possible by an understanding of these elements. With an emphasis on examining the social and economic circumstances faced by low-income families and determining the consequences of the increase in the poverty line in the study region, the study aims to investigate the variables contributing to the phenomenon of poverty in Anbar. A descriptive approach was used to interpret and analyze the findings of the study on the factors influencing the poverty phenomenon in Anbar. Additionally, the results of the questionnaire for the year 2024 were analyzed to determine the percentages of data pertaining to the phenomenon of poverty, which came to 452 families in the governorate. The spread of poverty in Anbar province dates back to a long history of economic and political factors. Due to the absence of employment prospects that coincide with population growth, this situation has gotten worse in recent years. High unemployment rates have resulted from this, making it difficult for many families to meet their basic necessities. This has had a detrimental effect on many facets of provincial life and aided in the rise of significant social issues and phenomena, including drug misuse, domestic violence, begging, and crime. One of the significant topics this study addresses is the poverty phenomena in Anbar. It concentrated on examining the political, social, economic, and demographic elements that fueled the development of poverty, including rising family sizes, fast population growth, inadequate education, joblessness, low incomes, and the worsening security conditions brought on by crises. The study's objectives are to present a scientific examination of these variables and offer suggestions for lowering poverty. Keywords: economic and social causes, poverty, and Anbar

INTRODUCTION

One of the most significant societal issues, poverty has both political and economic facets. Despite the vast differences in its scope and characteristics, this phenomena is present in every community. One of the most noticeable signs of poverty is low individual and family income, which has a direct effect on people's capacity to provide for their basic necessities and maintain a respectable standard of living. The general definition of poverty is a condition of social and economic incapacity that affects groups of people and keeps them from meeting the bare necessities of life, including housing, food, healthcare, and education. Depending on the current situation, many societies have different causes of poverty.

According to a field research conducted in Anbar, the high unemployment rate—which hit 25.9%—is one of the main causes of the governorate's rising poverty rate. About 21.2% of the sample under study were impacted by the dearth of employment options. Furthermore, a major factor in the deteriorating living conditions has been the state's lack of concern for the impoverished. The findings showed that these elements taken together have reduced people's capacity to make life decisions and adversely affected their capacity to exercise their right to free will and action.

Problem Statement

Poverty is a worldwide issue that differs from culture to culture. It has several ramifications and is caused by multiple variables. Thus, the following questions, which represent the dimensions of the phenomena, can be used to define the research problem:

1. Which key elements played a role in the development of poverty in Anbar?
2. How has poverty affected the governorate?
3. What social, economic, and living circumstances do low-income households in Anbar face?

Hypothesis

Given that poverty is a multifaceted problem with numerous causes, the study makes the following hypothesis:

1. The phenomenon of poverty in Anbar is influenced by a variety of social, economic, and political variables.
2. Anbar has witnessed the rise of numerous significant societal issues as a result of a number of influences.
3. Difficult living, economic, and social circumstances have been brought about by the phenomena of poverty among low-income families.

Aims of the Study

With an emphasis on the social and economic circumstances faced by low-income households, this study aims to examine the causes of poverty in Anbar. In order to provide a thorough understanding of the various aspects of poverty and its effects on the neighborhood, it also seeks to investigate the consequences of the high poverty line in the research region.

Significance of the Study

Given the current social, economic, and political conditions, the study's significance rests in exposing the depth of poverty and examining the real factors contributing to its spread in Anbar. By closing the gap between the rich and the poor, this study seeks to address the problem and bring about social justice. Additionally, it helps create development policies and strategies that are effective in addressing poverty in a radical and lasting way, which will have a good influence on raising living standards and bolstering social and economic stability in the governorate.

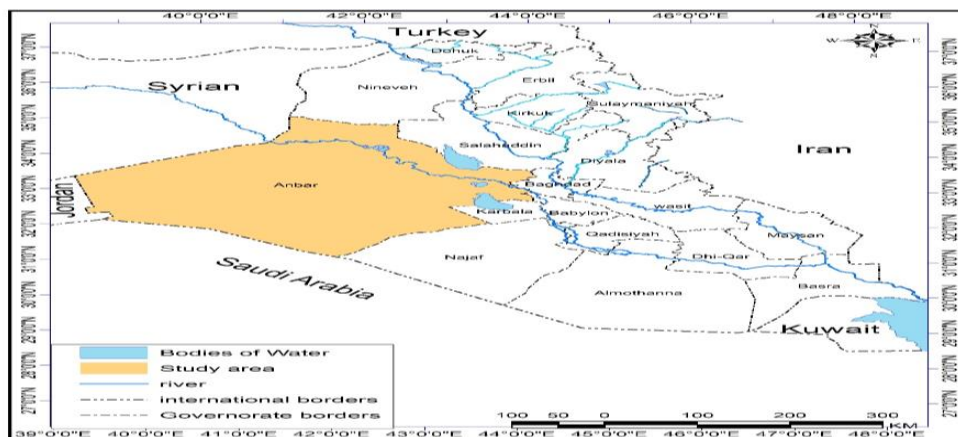
METHODS

The study relied on a descriptive approach to explain and analyze the factors influencing poverty in Anbar and the variation in poverty percentages across the governorate's regions.

Location of the Study

Anbar, located in the western region of central Iraq, is the study's stated borders. According to the Central Statistical Organization (2024), its area is roughly 137,289 km², or 31% of Iraq's total area of 435,052 km². It is located between latitudes 32°25' and 33°41' north and longitudes 42°27' and 43°38' east, according to astronomy. The Kingdom of Saudi Arabia borders it on the southwest, the Hashemite Kingdom of Jordan borders it on the west, and Syria borders it on the northwest. Six governorates round it administratively: Babylon, Najaf, and Karbala to the south and southeast; Saladin to the northeast; Nineveh to the north; and the capital Baghdad to the east. Map No. 1

Regarding the time constraints, the field study is based on the prior years' poverty census and concludes in 2024.



Map (1). Location of Anbar in Iraq

One of the most complicated and pervasive problems in the world, poverty stands in the way of raising living standards and attaining sustainable development. Economic, social, political, and demographic factors—most notably low income, unemployment, low wages, inadequate education, social marginalization, discriminatory laws, and demographic shifts—are all connected with its origins. Developing successful policies to fight poverty and advance social justice and economic development requires an analysis of these variables.

Population Change

Population is one of the most crucial demographic indicators for assessing population and development situations since it has a direct bearing on service accessibility, resource use, and development prospects. When sufficient infrastructure and opportunities are available, population growth helps to strengthen the labor market and reduce poverty; when such resources are not available, however, it causes social and economic crises and raises poverty rates [5].

Population Growth

Significant social and economic pressures are brought on by population expansion, particularly unplanned growth, which undermines development and economic well-being and lowers living standards [6]. According to studies, there is a direct correlation between the expansion of poverty and population growth since rising populations put more strain on available resources and employment prospects, which raises the poverty rate. Conversely, poverty is a driving force behind increased birth rates because of low educational attainment and a lack of social awareness, which perpetuates poverty in society. As can be seen from Table (1) and Figure (1), population of Anbar increased from 1997 to 2024. In 1997, the governorate's population was 1,023,739. By 2007, that number had increased to 1,485,985, representing a population growth rate of 3.8%, a percentage of 45.2%, and a population increase of 462,249. At a percentage of 16.2% and a population growth rate of 1.5 percent, the population of Anbar in 2017 was 1,725,914, and it has since grown by 239,929. According to estimates, the population of Anbar reached 2,064,003 in 2024, up 338,089 from the previous year. This represents a population growth rate of 2.6% and a percentage of 19.6%, indicating that relatively rapid and sustainable population growth has occurred in Anbar.

By putting more strain on infrastructure, economic resources, and spending levels, as well as by raising unemployment rates and decreasing industrial and agricultural activities, this unplanned population growth has made poverty issues worse. High fertility rates have also been a result of family planning failures, which has increased the financial strain on low-income families and diminished the state's capacity to meet the population's fundamental needs and services.

Year	Population	Population Increase	%	Growth ratio
1997	1023736	-	-	-
2007	1485985	462249	45.2	3.8
2017	1725914	239929	16.1	1.5
2024	2064003	338089	19.6	2.6

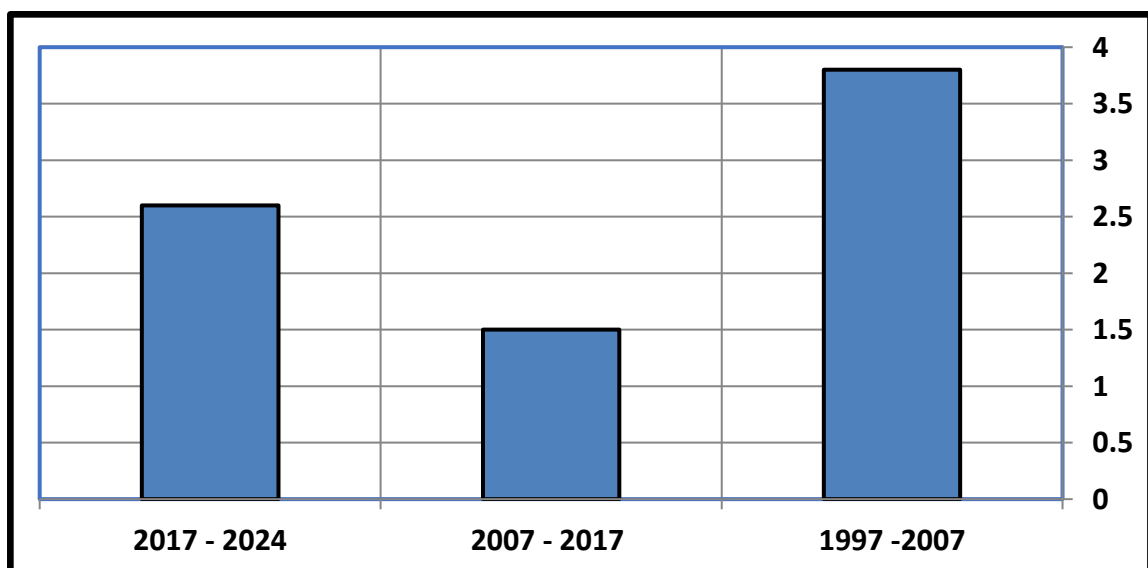


Figure 1. Population growth rate of Anbar for the period (1997-2024)

Increase in Family Size

The fundamental social unit, based on ties and carrying out tasks, is the family. It used to stand for financial and social assistance that improved family stability. However, due to economic changes and rising living expenses, it has become an economic burden today, weakening its social role and creating further pressures [7]. Poverty and living standards are impacted by family size. Along with its effects on income and education, the economic burden rises as the population grows, potentially lowering each person's share of resources and affecting their quality of life. Based on the field study's findings, Table (2) indicates that the average family size in Anbar in 2024 was 6.2 people, with an average of 5.6 people living in urban regions and 6.7 people living in rural areas. This indicates that families are larger in rural than in urban regions, which reflects societal and cultural disparities as well as growing financial strains. Due to their lower income, rural families are more susceptible to poverty.

Table (2) Average size of low-income households in Anbar in 2024

Urban	Rural	Total
5.6	6.7	6.2

Since the number of family members and the frequency of poverty are directly correlated, knowing the number of family members is crucial to understanding the level of life. Each supports the other. The cost of living rises with family size, while per capita income and access to essential services decline. Poverty is made worse by this. On the other hand, poverty can occasionally result in larger families, which makes the issue worse. The relative distribution of people living in low-income families in Anbar in 2024 is displayed in Table (3) and Figure (2). Families with two to five people made up 45.4% of the total, while the largest share (46.0%) were families with six to nine people. Families with ten or more members made up 8.9% of all families. This suggests that medium and large family arrangements are more common. Due to rising living expenses and falling per capita income, poverty rates rise as family sizes increase. This is particularly true for low-income families, whose capacity to save and better their financial circumstances is diminished.

Table (3) Members of low-income households in Anbar for the year 2024 based on the field data

Family size	2-5 members		6-9 members		10 and above		%
	Freq.	%	Freq.	%	Freq.	%	
452	205	45.4	208	46.0	39	8.6	100

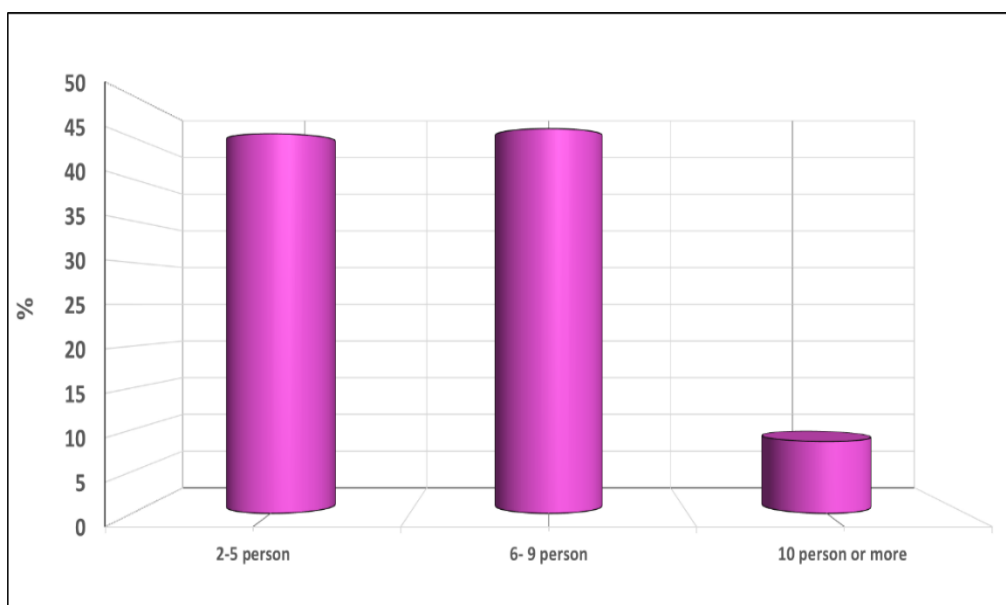


Figure (2) Members of low-income households in Anbar for the year 2024

Social Factors

The spread of poverty is significantly influenced by social variables. Widespread illiteracy and a shortage of employment prospects are caused by low educational attainment and inadequate vocational training programs. This contributes to the continuation of the poverty cycle by having a detrimental effect on low-income families' income and making it more difficult for them to achieve their fundamental necessities. The field study

demonstrated that a number of interconnected socioeconomic factors contribute to poverty and marginalization in the governorate, including the following:

A: Low Level of Educational

Because it restricts employment options and raises unemployment rates, particularly for low-income families with high school dropout rates, a low level of education directly contributes to the continuation of poverty. [8]

Poverty and education have a reciprocal relationship. While poverty is a barrier to accessing quality educational opportunities, education is a powerful tool for breaking free from the cycle of poverty. Anbar has high and notable rates of school dropout, despite the fact that education plays a vital role in the lives of the populace. According to Table 4, 43.7% of heads of low-income households stated that their children's school dropout was mostly caused by poverty and their incapacity to pay for their education. On the other hand, 19.0% of parents said that their kids left school to work and provide for the family, 18.3% blamed this on a lack of interest in learning, 12.0% on parental neglect, and 7.0% on the distance from school. This suggests that Anbar poverty makes it more difficult for families to give their kids an education as they can't afford basic necessities. Nevertheless, despite the challenging economic circumstances they encounter, many families insist on their children's education being continued in order to create a brighter future.

Table (4) Reasons for dropout of school for students from low-income households in Anbar for the year 2024

Work to support family		Low income		School dropout		Parental neglect		Distance from school		%
Freq.	%	Freq.	%	Freq.	%	Freq.	%	Freq.	%	
30	19.0	69	43.7	29	18.3	11	12.0	19	7.0	100

B. Quality of Homeownership

One of the fundamental elements of a decent living is housing. The population's level of cultural and social awareness, as well as their economic and health conditions, are reflected in its quality [9]. There is a clear proportionality between poverty and housing conditions. Housing conditions are adversely affected by high levels of poverty because of the restricted financial resources of households. Families' quality of life consequently suffers, and their social stability is put in jeopardy. According to the findings, which are displayed in Table (5), the majority of low-income households (65.3%) reside in average-quality housing, followed by good housing (28.5%) and poor-quality housing (6.2%) throughout Anbar. Although there is a chance that medium-quality housing could degrade into poor-quality housing as a result of poor upkeep, the data also show that the housing of low-income families in Anbar is concentrated at an acceptable standard. This indicates inadequate housing support and foreshadows a crisis in the future.

Table (5) Housing quality for low-income households in Anbar for 2024

Good		Medium		Bad		%
Freq.	%	Freq.	%	Freq.	%	
129	28.5	295	65.3	28	6.2	100

Due to their inverse link, home ownership has a significant role in reducing poverty. Effectively encouraging home ownership lowers poverty rates and raises living standards. The difference in home ownership between low-income families is displayed in Table (6) and Figure (3). While 19.9% of the housing units in the governorate are rented, 48.5% of the housing units are owned by the people. Within the governorate, the proportion of housing units occupied by squatters was 3.5%, while the percentage of housing units shared with families was roughly 28.1%. A sizable portion of shared housing with families and a relative balance between homeowners and renters indicate the social and economic obstacles that prevent the supply of secure, independent housing. Furthermore, there is a considerable but small amount of informal housing, which suggests that there are housing issues that call for planning and development initiatives to enhance living circumstances.

Table (6) Homeownership in Anbar in 2024

Owned		Rented		Share house		Random Housing		%100
Freq.	%	Freq.	%	Freq.	%	Freq.	%	
219	48.5	90	19.9	127	28.1	16	3.5	100

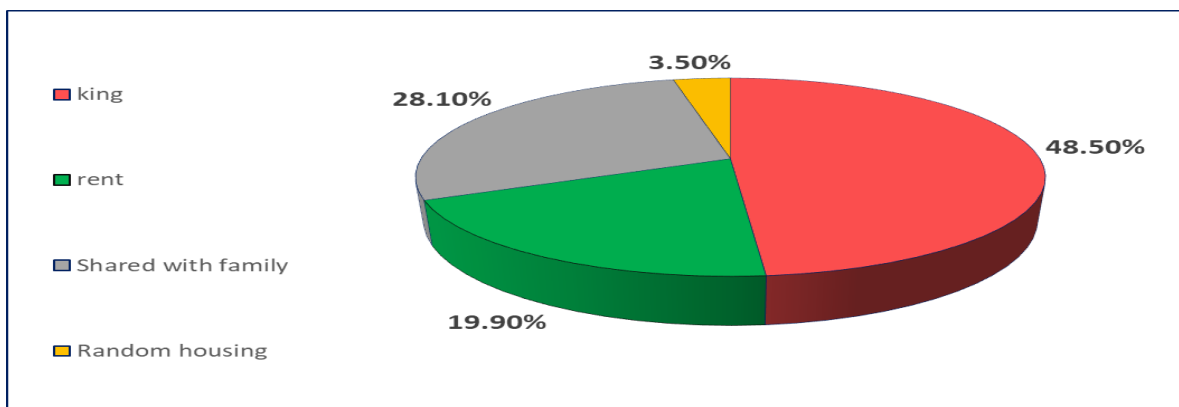


Figure (3) Homeownership for low-income households in Anbar for 2024

C. Family Problems

The character and pattern of social relationships among low-income families have undoubtedly been influenced by family issues. Poverty has a detrimental effect on family stability as well as its psychological and social functions and exacerbates existing family issues. This exacerbates family issues by showing up in marital communication and relationships. Because there are few or no job possibilities, family and social stability are declining in Anbar. Due to the high unemployment rates that have resulted—roughly 72.6%—social ties have suffered, and social deviance—such as theft, drug addiction, and crime—has increased. Weak social protection and worsening economic situations are the causes of these events. The issues brought on by rising poverty rates, which reached about 21.2%, as well as family housing issues, which impoverished families face, total 6.2%, as indicated in Table (7).

Table 7. Family issues in low-income households

Lack of job opportunities		Crowded house		High poverty		%100
Freq.	%	Freq.	%	Freq.	%	
328	72.6	28	6.2	96	21.2	100

D- Social Problems

The main cause of begging, along with other elements like unemployment and inadequate education, is poverty. Some people may turn to begging as a source of income. Begging has not become a common practice among families in the governorate, despite the social and economic difficulties that impoverished people face. This illustrates how well family and tribal support systems function to lessen the consequences of poverty and how cohesive society's ideals are. Despite low living conditions and high unemployment rates, 96.5% of the population does not engage in begging, according to data in Table (8), demonstrating the community's commitment to self-reliance and dignity. However, in an effort to meet their fundamental necessities, some people have been forced to labor in marginal or socially unsuitable jobs due to a lack of resources. Due to poor salaries, 3.5% of the population turns to begging as a way to meet their fundamental necessities.

Table 8. Practice of begging among low-income households

No- Beggar		Beggar		%100
Freq.	%	Freq.	%	
436	96.5	16	3.5	100

Economic Aspects

Poverty rates are largely caused and sustained by economic causes. The standard of living of individuals is influenced by national economic indices, including inflation, economic growth, income distribution, unemployment, and fiscal policy. These elements impact the likelihood of finding work and earning enough money to cover necessities. As a result, comprehending this link is crucial for creating economic policies that effectively close the social divide and promote justice and sustainable development. [10]

Low Family's Low Monthly Income

Since income affects family consumption and allows people to meet their fundamental needs, it is one of the main factors contributing to poverty. It is also the main determinant of the family's and individual's standard of living. [11] Poverty and low income are closely linked because low income makes it harder for people to meet their fundamental needs and restricts their access to good jobs, high-quality education, and necessary medical care.

According to Table 9, the majority of impoverished households—roughly 60.4%—earn between 251 and 500 thousand Iraqi dinars per month, while 21.9% of families earn less than 250 thousand dinars. The share of families with monthly incomes over 501 thousand dinars did not surpass 17.7%. These numbers represent one of the most significant markers of the growth of poverty since the economy's decline encourages people, particularly young people without jobs, to engage in harmful activities like organized crime, theft, drug abuse and trafficking, and other risky social phenomena.

Table (9) Monthly income (thousand Iraqi dinars) for low-income households in Anbar in 2024

Below 250		251-500		501+		%100
Freq.	%	Freq.	%	Freq.	%	
99	21.9	273	60.4	80	17.7	100

Field Study Data

One of the main determinants of a family's level of living and financial stability is their source of income, especially for low-income families that depend on sporadic or seasonal income and suffer from limited resources, leaving them susceptible to emergencies and changes in the economy. In order to comprehend their social and economic realities and pinpoint the obstacles preventing them from raising their standard of living, the significance of various sources—such as salary, earnings, retirement, and social welfare—is emphasized.

At 60.8%, the majority of families in Anbar depend on wages and salaries as their main source of income, according to data from Table (10). Nonetheless, the low levels of these incomes or the scarcity of high-yielding employment alternatives are the reasons behind the ongoing poverty rates.

Although 16.8% of households rely on retirement income as a source of income, it is sometimes insufficient to cover essential expenses. A wide spectrum of groups are not engaged in the job market, as evidenced by the fact that 22.4% of households are dependent on social welfare. This demonstrates that low income levels and a lack of diversity in the origins of poverty are associated with poverty in the governorate.

Table (10) Sources of income of low-income households in Anbar in 2024

Salary & Wages	%	Retire	%	Social Care	%	No. of low-income household	%100
275	60.8	76	16.8	101	22.4	452	100

Low Economic Level and Low Wages

One of the primary causes of the growth in poverty is low salaries and a monthly income that is insufficient to meet basic household necessities. Low minimum wages or low-paying occupations are the cause of this problem, which is associated with a lack or drop in income. When a person's salary is not enough to meet their fundamental needs, they are seen to be poor. Poverty is becoming more common and more severe as the economy continues to deteriorate and prices rise.[12]

According to the field study's findings, which are displayed in Table (11), 67.9% of the sample experience monthly incomes that are insufficient to meet their fundamental needs.

The main cause of this is the low income levels brought on by widespread unemployment and a lack of employment opportunities, particularly in the absence of other sources of income, such as other family members' contributions or alternative employment opportunities. As a result, they are unable to meet the necessities for a respectable existence. In the meantime, 7.5% of respondents said their salary is enough to meet their fundamental needs, while 24.6% said it is occasionally enough to cover them.

Table (11) Monthly income coverage of household expenses in Anbar in 2024

Yes		No		Sometimes		%100
No	%	No	%	No.	%	
34	7.5	307	67.9	111	24.6	100

Increased Unemployment Rates

One of the biggest problems in society is unemployment. In addition to wasting human resources and causing financial losses, its effects also include raising poverty rates and degrading health and educational systems. It has a detrimental effect on the social fabric, especially among youth, and fosters an atmosphere that encourages crime, extremism, violence, and delinquency. The number of people living below the poverty line rises, dependency rates rise, and the level of living declines as a result of the lack of income [8].

Given that unemployment is the main cause of poverty, the two conditions are closely related. Because income and living standards are dropping, poverty rates rise in tandem with unemployment rates. According to data from Table (12), the governorate's unemployment rate was roughly 25.9%, with urban regions recording a rate of 25.6% and rural areas recording a rate of 26.3%. Because it raises poverty rates, lowers living standards, exacerbates social issues like crime and violence, and puts more strain on public services, this is a risky sign of a serious economic and social catastrophe. In order to resolve the issue and generate employment possibilities, immediate action is needed.

Table (12) Unemployment rates for low-income households in Anbar in 2024

	Number of unemployed people	Number of employees	Unemployment rate
Total unemployment rate	96	274	25.9
urban unemployment rate	50	145	25.6
Rural unemployment rate	46	129	26.3

Measuring the Unemployment Rate: Calculating the unemployment rate requires knowing the ratio of unemployed individuals to the labor force. It is calculated using the following equation:

$$\text{*Unemployment Rate} = \frac{\text{Number of unemployed individuals}}{\text{Total labor force (Number of unemployed + Number of employed individuals)}} \times 100$$

Source: Muhammad bin Abdullah Al-Jarrah, Ahmad bin Abdul Karim Al-Muhaimid [13]

Head of the Household's Career

By allowing him to meet their basic needs, the head of the household's occupation significantly improves the living and financial circumstances of his family members. The head of the household's income is positively impacted by the quality of his occupation, which helps him achieve a more stable and affluent existence and raises his level of living [14]. It is evident from the data in Table (13), that the rise in poverty rates is directly correlated with the head of the household's profession's weakness. The family is more likely to live below the poverty line if the career is less secure and the pay is lower. Most impoverished households in Anbar currently depend on a single source of income—typically the head of the household—to meet their basic necessities due to unemployment and a lack of employment prospects. The head of the household's employment at a governmental institution is the only source of income, according to 27.9% of the sample, while the head of the household's employment in the private sector is the main source of income, according to 10.2%. On the other hand, 22.5% of households had members who depend on daily or seasonal labor (salaries), while 39.4% of households had individuals who depend on social security institutions or on social assistance as their only source of income.

Table (13) Professional status of the head of low-income households in Anbar in 2024

Employee		wage earner		Private sector		Unemployed		%
No.	%	No.	%	No.	%	No.	%	
126	27.9	102	22.5	46	10.2	178	39.4	100

Reasons for Unemployment

One of the essential foundations of a secure existence and self-sufficiency is employment. However, a lot of people have physical, social, or economic issues that keep them from working, like low pay, few prospects, low motivation, or inadequate credentials. Therefore, comprehending these causes necessitates identifying solutions that support sustainable development and lower unemployment. There are differences in the causes of unemployment, as shown in Table (13). The highest percentage (53.9%) was due to a lack of employment prospects, followed by illness or disability (25.8%). Old age-related unemployment was 20.2%. In addition to health and demographic factors that contribute to high unemployment rates and the escalation and maintenance of poverty, this distribution is caused by varied demographic, economic, and health conditions of individuals, reflecting the effects of limited opportunities and a weak economic structure.

Table (13) Reasons for head of low-income households Unemployment in Anbar in 2024

Lack of job opportunities		Disability and illness		Elderly	
Freq.	%	Freq.	%	Freq.	%
96	53.9	46	25.8	36	20.2

Number of Workers and Contributors in the Family

Several family members helping to pay for expenses is a significant contributor to raising living standards. According to the field study's findings, poverty and the number of family workers are inversely correlated. According to Table (14), 78.5% of families rely on one source of income, which is frequently the household head. Because the remainder of the family has fewer work options, this makes life more difficult. This reality is a result of bad economic planning, a lack of investment in human resources, and high rates of poverty. Additionally, a lack of employment possibilities, whether in the public or private sectors, lowers people's spending power overall and degrades their standard of living.

Table (14) Number of workers in low-income households in Anbar in 2024

1		2		3+		%100
Freq.	%	Freq.	%	Freq.	%	
355	78.5	79	17,5	18	4.0	10

Dependency

The demographic link between various age groups is reflected in the population dependency phenomena. The population is separated into two groups: the productive group, which includes people between the ages of 15 and 65, and the non-productive group, which includes people under the age of 15. The economic burden that the producing category bears in order to support other categories is expressed by the dependency ratio. It is calculated by dividing the total number of productive individuals by the total number of non-productive individuals. [15] Examining the effects of a high dependency ratio on poverty rates and family standards of living reveals the connection between poverty and economic dependency. Because expenditure is concentrated on supplying necessities like food, a high dependency ratio results in more spending and lower savings rates. Families with high dependency ratios also push their children into the labor market early, exacerbating child labor and increasing poverty rates. [16]

The category of children under the age of fifteen recorded a high percentage, reaching 31.7% of the total poor population, according to Table (15), which shows the relative distribution of age groups of the poor population in Anbar for the year 2024. This is indicative of high fertility rates and raises the living expenses on families as a result of the growing demand for basic services. On the other hand, the biggest percentage of the productive age group (15–64 years) was reached (66.2%). Its capacity to successfully lessen the severity of poverty, which is a reflection of an imbalance in population employment, is, however, limited by the dearth of job possibilities and high unemployment rates. Although the percentage of people 65 and over was only 2.1%, it is still a tiny group that need specific health and social care because there are no integrated social security systems in place.

According to Table (15), the dependency ratio reached 51%, which means that for every 100 individuals of working age, 51 unproductive people are supported. This represents a substantial financial and social strain on families. Additionally, the governorate's poverty rate was 30.5%, which indicates that around one-third of the populace is below the poverty level. These indicators taken together show that poverty in Anbar is not just a result of low income and job opportunities, but also of the demographic makeup and high rates of dependency. As a result, comprehensive development strategies that prioritize increasing employment opportunities, enhancing children's education and health, and offering social safety nets to groups unable to work must be implemented.

Table (15) Age groups of the poor population in Anbar, dependency ratio and poverty in 2024

Age group	Under 15	15-46 %	65+	dependency ratio	Poverty ratio %
	31.7	66.2	2.1	51.0	30.5

The Political Factor (Wars, Crises, and State Policy)

Iraq's economic and living conditions have deteriorated since the 1980s due to a series of wars, economic sanctions, and crises that have made poverty worse. Iraq's poverty stems from a number of complicated factors, including the effects of war, the political structure, the economic blockade, inadequate social and economic policies, and the growth of financial and administrative corruption, rather than a lack of resources and talents.

Living conditions have suffered as a result of these factors, which have raised the proportion of individuals living below the poverty line. [17] Particularly since 2003, Anbar is among the Iraqi governorates most impacted by the complicated security and economic circumstances. Poverty in the governorate was 20.9% in 2007, 15.4% in 2012, and 20.9% in 2024, according to the findings of the 2007 Economic and Social Survey of Poor Households.

Since deteriorating security has a detrimental effect on infrastructure, economic activity, and living conditions, it is a crucial cornerstone of stability and prosperity. As a result of higher crime rates, displaced people, and weakened social cohesion, poverty further exacerbates the security situation. One of the Iraqi governorates most impacted by the turmoil of the last ten years is Anbar, where there has been a 28% increase in the cost of necessities, extensive infrastructure devastation, and mass displacement. As a result, income levels have decreased, unemployment rates have increased, and health issues have gotten worse. According to the study's findings, 55.3% of low-income households directly attribute their poverty to security conditions, whilst 44.7% do not. This suggests that security factors interact with social and economic causes to cause poverty in Anbar.

Table (16) The impact of the security conditions of low-income households on the phenomenon of poverty in Anbar in 2024

Yes		No	
%	Poverty %		Poverty %
55.3	26.5	44.7	30.1

The Corruption Perceptions Index, published by Transparency International, shows that Iraq's corruption score has declined from 129th in 2004 to second in the world in 2006 and 140th out of 180 in 2024. The URL is <https://arabic.cnn.com>. [18] In order to address the causes of poverty and attain social and economic stability in the province, this fact necessitates the adoption of extensive reforms.

CONCLUSIONS

1. Wars, economic sanctions, and worsening security circumstances are only a few of the political and economic causes that have accumulated over decades to create poverty in Anbar . Both unemployment and the number of low-income households have increased as a result of these issues.
2. As family sizes increase, dependency ratios rise as well, increasing financial strains and making it harder for families to meet their basic needs.
3. The study area's population has grown significantly, which has had a detrimental effect on the social situation and resulted in a reduction in service delivery, which has raised the governorate's poverty rates.
4. A significant portion of impoverished households in the governorate have low monthly incomes, which is exacerbated by the unequal distribution of income.
5. According to the report, the majority of low-income families only have one source of income, which exacerbates their already dire living circumstances and makes it harder for them to handle emergencies.
6. One of the main causes of school dropout is poverty, which drives many kids from low-income households to leave school and go for job in order to improve their challenging living circumstances.
7. Living conditions for impoverished families are challenging, especially in slums that lack basic amenities and suitable housing.
8. Poverty has resulted in a variety of family, societal, and economic issues, including begging and unemployment.

RECOMMENDATIONS

1. To achieve sustainable economic development and assist the local economy in overcoming obstacles, develop human capital, diversify output, and carry out efficient infrastructure projects.
2. Utilize the governorate's resources to improve economic conditions. Real political will and drastic changes are needed for this, starting with the fight against financial and administrative corruption.
3. Repair infrastructure that has been harmed by wars and security incidents, as this helps to foster an atmosphere that is favorable to economic expansion, the creation of jobs, the reduction of unemployment, and the stimulation of the local economy.
4. To improve economic and social conditions, the local government must implement a comprehensive development strategy that allows vulnerable populations to increase their income levels and creates work opportunities. In the governorate, this will improve social and economic stability and lessen poverty.
5. Deal with the issue of begging by enacting laws that will discourage it.

REFERENCES

- Al-Hasnawi, Z. M. M. (2017). *Spatial relationships of population characteristics and poverty in Dhi Qar Governorate for the period 1997–2015* (Unpublished doctoral thesis). College of Education, University of Kufa. <https://t.me/Jaboury>
- Wahid Sabah Al-Jubouri, N. (2019). *Spatial analysis of poverty levels in Najaf Governorate for the period 2006–2017* (Master's thesis). College of Education for Girls, University of Kufa. <https://top4top.io/process/ed05a587203e5c055f8c3b9a966c6cde749916ed>
- Al-Batihi, A. R. M., & Al-Kaabi, A. A. A. (2014). Spatial variation of poverty in Iraq and its relationship to the environmental, social, and economic characteristics of the population. *Al-Ustadh Magazine*, 1(210). <https://www.researchgate.net/publication/>
- Azio Dakhel Al-Abadi, Z. (2021). Spatial variation of the poor population in Wasit governorate (Master's thesis). College of Education for Humanities, University of Wasit. <https://t.me/Jaboury>
- Radian, M. S. (2024). Population growth and poverty in Iraq. *Iklil Journal of Humanities*, 5(3/2), 1199–1200. National Center for Population and Demographic Studies, University of Baghdad. <https://iasj.rdd.edu.iq/journals/uploads/2025/01/25/3108e31b79ece96f4ebe311daf3c76b1.pdf>
- Al-Najm, A. A. K. K. (2019). Spatial variation of urban poverty indicators in the city of Kufa. *Journal of the College of Education for Girls for Humanities*, 24(13), 301. <https://journal.uokufa.edu.iq/index.php/ewjh/article/view/8981/866>
- Rasan, N. S. (2008). Family size in the urban areas of Wasit Governorate. *Kufa Literature Magazine*, (2), 109. https://journal.uokufa.edu.iq/index.php/kufa_arts/article/view/6253
<https://search.emarefa.net/ar/detail/BIM>
- Kazim Al-Zubaidi, H. L. (2007). Poverty in Iraq: A human development perspective. *Arab Economic Research*, 38, 104–105. https://asfer.journals.ekb.eg/article_272255_b8be0957a53a1e198f000af6805eb184.pdf
- Mahmoud, H. (2019). The housing problem in light of international experiences (Issue Fifteen). *Studies and Reports of the Advisory Center for Studies and Documentation*. <https://dirasat.net/uploads/research/8374029.pdf>
- Saadoun Dhafir Al-Zuhairi, S. S. (2023). Spatial analysis of the economic deprivation index and its relationship to demographic characteristics in Dhi Qar Governorate (Unpublished doctoral dissertation). College of Education, Al-Mustansiriya University. p. 53. https://t.me/joinchat/gB3C65JU_uA1NjBk
- Akila, E. E.-D. Z. (2013). The impact of the standard of living on health and education services in the Gaza governorates (Unpublished master's thesis). Faculty of Arts, Islamic University of Gaza. p. 42. <https://www.mobt3ath.com/pdf.php?ext=pdf&id=3314&tit=%D8%B1%D8%B3%D8%A7>
- Al-Saadi, A. R. A. S. (2020). Spatial analysis of the poverty phenomenon in the city of Basra using geographic information systems (Unpublished doctoral dissertation). College of Education for Humanities, University of Basra. p. 31. <https://t.me/A5223267>
- Kazim Al-Zubaidi, H. L. (2007). Poverty in Iraq: A human development perspective. *Arab Economic Research*, 38, 104–105. https://asfer.journals.ekb.eg/article_272255_b8be0957a53a1e198f000af6805eb184.pdf
- Al-Jarrah, M. bin A., Abdul Karim, A. bin A., & Al-Muhaimid. (2010). Principles of macroeconomics: Concepts and basics (2nd ed.). https://www.mu.edu.sa/sites/default/files/content-files/1_41_0.pdf
- Rahman Awda, B., & Hassan, S. A. B. (2016). The problem of urban poverty in contemporary Iraqi society: A social field study of the city of Diwaniyah. *Al-Qadisiyah Journal*, 16(1), 304. https://www.researchgate.net/publication/316656517_mshklt_alfqr_alhdry_fy_almjtm_alraqy_almasr
- Abu Ayana, F. M. (2000). Studies in demography (pp. 220–221). Dar Al Nahda Al Arabiya. <https://www.mediafire.com/?skd83e3kxg8z3zy>
- Muhammad, J. J. (2017). Poverty and its relationship to population characteristics in Iraq in 2014 (Unpublished doctoral dissertation). Ibn Rushd College of Education, Iraq. p. 140. <https://ircoedu.uobaghdad.edu.iq/?p=1124>
- Hafez, H. Y. (2023). The reality of poverty in Iraq: Challenges and proposals. *Iraqi Journal of Economic Sciences*, 76(21), 94. <https://ecournal.uomustansiriyah.edu.iq/index.php/ecournal/article/view/849/6>
<https://arabic.cnn.com/middle-east/article/2025/02/17/corruption-index-2024-arab-infographic>
- Satam, A.T.M., Mukhlef, W.H., Razzaq, A.S.A.A., Mushref, Z.J., Sulaiman, S.O. (2025). Spatial and temporal variations in water quality of the Euphrates River: A sustainable water management approach for Anbar Governorate, Iraq. *International Journal of Design & Nature and Ecodynamics*, Vol. 20, No. 1, pp. 99-106. <https://doi.org/10.18280/ijdne.200111>
- Republic of Iraq Ministry of Planning Central Statistical Organization Census and numbering results for the population of Anbar for the year 2007 <https://molsa.gov.iq/?page=159>

- Republic of Iraq Ministry of Planning Central Statistical Organization Census and Numbering Results for the Population of Anbar for the Year 2017. <https://cosit.gov.iq/ar/1149-2014-4>
- Republic of Iraq Ministry of Planning Central Statistical Organization Census and Numbering Results for the Population of Anbar for the Year 2024. <https://www.cosit.gov.iq/ar/>
- Annual Statistical Abstract (2012-2013) Table No. (1/1) Natural Conditions Chapter <https://cosit.gov.iq/ar/1007-year-book-2>
- Satam, A.T.M., Mekhle, S.A., Mushref, Z.J., Sulaiman, S.O. (2024). Sustainable management strategies of the water pollution of the Euphrates River within Ramadi City west of Iraq. *International Journal of Sustainable Development and Planning*, Vol. 19, No. 9, pp. 3587-3593. <https://doi.org/10.18280/ijstdp.190926>

APPENDICES

Appendix (1) Numerical distribution of the average size of low-income households in Anbar for the year 2024

Urban		Rural		Total	
No. of members	Bo. Of families	No. of members	Bo. Of families	No. of members	Bo. Of families
1299	233	1457	219	2752	452

Appendix (2) Numerical distribution of age groups of the poor population in Anbar and the number of poor people for the year 2024

Below 15	15-64	65 +	Poverty %	
828	1728	55	929	3032

* *Dependency ratio = Number of economically inactive persons / Number of economically active persons × 100*

** *Poverty ratio = Number of dependents living below the poverty line / Total number of dependents*

Appendix (3) Numerical distribution of the impact of security conditions on low-income households and the phenomenon of poverty in Anbar for the year 2024

Yes		No	
Low-income households	Total population	Low-income households	Total population
250	945	202	670